

RESEARCH

Open Access



Dental and oral health assessments in the German National Cohort (NAKO)

Stefanie Samietz^{1†}, Katrin Borof^{2†}, Katrin Hertrampf³, Ghazal Aarabi², Antonio Ciardo⁴, Hannah Finke⁵, Daniel Hagenfeld⁶, Jan Kühnisch⁷, Maurice Rütters⁴, Sebastian-Edgar Baumeister⁸, Stefan Lars Reckelkamm^{6,8}, Ti-Sun Kim⁴, Thomas Kocher⁹, Wolfgang Ahrens¹⁰, Hermann Brenner¹¹, Carina Emmel¹², Beate Fischer¹³, Amand Führer¹⁴, Karin Halina Greiser¹⁵, Jasmin Grischke¹⁶, Kathrin Günther¹⁰, Volker Harth¹⁷, Stefanie Jaskulski¹⁸, André Karch¹⁹, Thomas Keil^{20,21,22}, Yvonne Kemmling²³, Alexander Kluttig¹⁴, Lilian Krist²⁰, Oliver Kuss²⁴, Michael Leitzmann¹³, Claudia Meinke-Franze²⁵, Karin B. Michels¹⁸, Nadia Obi¹⁷, Anette Peters^{26,27}, Nicole Pischon^{28,29,30}, Tobias Pischon^{28,29,31}, Sabine Schipf²⁵, Borge Schmidt¹², Henning Teismann¹⁹, Stefan Rupf^{32*†} and Birte Holtfreter^{9†}

Abstract

Background Despite considerable improvements in oral health in recent decades, caries and periodontitis are still widespread, ranking among the most prevalent diseases worldwide and requiring future research. The German National Cohort (NAKO Gesundheitsstudie, NAKO) is a large-scaled, multidisciplinary, nationwide, multi-centre, population-based, prospective cohort study with oral examinations that aims to provide a resource to study risk factors for major diseases. The aim of the present article is to provide the methodological background, to report on the data quality, and to present initial results of the oral examinations.

Methods During baseline examinations (2014–2019), a total of 205,184 persons aged 19–74 years has been examined in 18 study centres, including, among others, a dental interview, stimulated saliva sampling, and recording of the numbers of present teeth and prostheses (standard Level 1 program). As part of the Level 2 program that was offered to 20% randomly selected participants, each study centre selected one of three modules, one of them being the Level 2 oral examination. This extended program was carried out in a subgroup of 20,828 participants, including collection of detailed information on the dental and prosthetic status as well as on periodontal, cariological and functional aspects. To ensure reliability and reproducibility, study nurses were trained and calibrated by dental experts. In addition, a reliability study was conducted among 794 Level 1 and 359 Level 2 participants, reporting intra class correlation and kappa coefficients.

Results Intra class correlation and kappa coefficients for observer agreement and reliability were consistently above 0.7, indicating good to excellent reliability of all dental measurements. For example, intra class correlation was 0.937 for the number of present teeth (Level 1), 0.740 for mean probing depth (PD) and 0.797 for active mouth opening. An initial inspection of the data showed that the median number of present teeth was 27, of which

[†]Stefanie Samietz, Katrin Borof, Stefan Rupf and Birte Holtfreter contributed equally to this work.

*Correspondence:

Stefan Rupf

Stefan.Rupf@uks.eu

Full list of author information is available at the end of the article



on average 6.9 teeth were healthy and caries-free. Average mean PD was 1.92 mm. An orthodontic treatment was reported by 35.5% of participants.

Discussion Overall, the dental study protocol was feasible and successfully integrated into the NAKO's overall assessment program. However, rigorous support of the study centres by dental professionals was required to ensure high quality data. In summary, high-quality data collection within the NAKO paved the way for future investigation of potential risk factors for oral diseases and links between oral and systemic diseases and conditions.

Keywords Epidemiology, Cohort study, Cross-sectional, Caries, Periodontitis, Dental status, Temporomandibular disorders, Oral health

Background

Recent decades have been characterized by global public health impacts such as increasing social inequalities, ageing populations, a global pandemic, and an increased prevalence of noncommunicable diseases [1]. Resultingly, important determinants of health, such as access to public health service, common risk factor profiles, living conditions and environmental exposures, are changing over time. Therefore, large-scale cohort studies have the potential to detect such changes and use these insights to improve prevention.

Oral health is a 'fundamental component of health and physical and mental wellbeing' [2]. It is multi-faceted and 'includes the ability to speak, smile, smell, taste, touch, chew, swallow and convey a range of emotions through facial expressions with confidence and without pain, discomfort and disease of the craniofacial complex' [2]. The two most prevalent oral diseases, dental caries and periodontitis, are a major public health problem worldwide [3, 4] and the main causes of tooth loss across the lifespan [5]. It is thus of great importance to identify prevention and risk factors in order to improve primary prevention or treatment measures. Comprehensive data from large cohort studies on the most common oral diseases are therefore urgently needed.

Untreated caries in permanent teeth is the most prevalent health condition worldwide, affecting 2.3 billion people in 2017 [6]. Only few studies have been published to assess caries trends in adults worldwide [7–18]. In Germany, the number of decayed or filled teeth per person and the number of persons affected by caries decreased consistently over the last two decades [9, 16, 17, 19]. Fluoridated toothpastes and salt fluoridation have been central to reducing dental caries in Germany over the past five decades [20–24], with toothpaste adoption in the 1970s driving early declines both in adolescents and adults in West Germany and post-reunification use contributing to rapid decreases in East Germany [17, 25]. The introduction of salt fluoridation in 1991 [26] provided complementary, population-wide benefits, especially in underserved groups or regions with inconsistent toothpaste use, helping to sustain and extend caries reductions

into the twenty-first century. In 2005, fluoridated table salt had a market share of around 67% in Germany [27]. While both interventions have significantly reduced caries prevalence, limited studies have directly compared their independent and combined effects, leaving gaps in understanding their relative contributions.

Chronic periodontitis is a highly prevalent oral disorder [28–31], as evidenced by a recent meta-analysis of periodontitis prevalence data from studies performed between 2011 and 2020, which estimated the prevalence to be approximately 62%, with severe forms observed in 23.6% of cases. Based on data from the Global Burden of Disease Study, severe periodontitis affected 1067 million people in 2021 [28]. Periodontitis is caused by a destructive inflammatory host response after the microbiome of the crevice has shifted towards pathogenesis composition [32], and leads to a loss of connective tissue and supporting tissue and, if left untreated, tooth loss. While inconsistent information about recent trends of periodontitis prevalence was reported [33–36], treatment needs are expected to increase further due to higher numbers of exposed natural teeth, a shift to more aged populations and global population growth [28, 37]. In 2014, about 51.6% and 64.6% of 35–44- and 65–74-year-old Germans, respectively, had moderate or severe periodontitis [37], which illustrates the high need for treatment in Germany [38].

Periodontitis does not only affect the oral cavity, but is potentially linked to several systemic diseases. Specifically, evidence suggests that chronic periodontitis affects metabolic control in diabetes patients [39, 40], and may also be linked to cardiovascular diseases [41–43]. Both diseases have a high and increasing prevalence, incidence, and morbidity, and cardiovascular diseases are responsible for most deaths worldwide [44]. Therefore, periodontitis should be understood as a disease with a considerable impact on general health.

Tooth loss is the endpoint of the most prevalent dental diseases, dental caries and periodontitis [5], and leads to reduced masticatory function [45] and to substantial decline in oral health-related quality of life (OHRQoL) [46, 47]. In recent decades, the prevalence of edentulism

(toothlessness) has declined, while the number of retained teeth has increased, especially in older subjects [37]. Globally, age-standardized prevalence of edentulism was 3.3%.

Malocclusion and temporomandibular disorders are among the less common oral diseases. The prevalence of malocclusion and temporomandibular disorders in adults is unclear. According to a recent systematic review, 25% of European children and adolescents had a Class II malocclusion, while 5% had an anterior crossbite [48]. Studies among German children showed an increased (>4 mm) and negative overjet in 16–31% and 1–3%, respectively [49–51]. An increased (>4 mm) or negative overbite was found in 21–46% and 3–17% of German children, respectively [49, 51, 52]. Temporomandibular disorders are one of the most common orofacial pain conditions [53] with varying prevalence across surveys. While 2.7% of the population in north-east Germany was affected by temporomandibular joint pain and muscle disorders around the year 2000 [54], in Sweden it was 10% of the adult population around 2011 [55]. Temporomandibular disorders can impair the quality of life to large extent [56, 57].

The NAKO was designed to investigate possible causes and mechanisms for the onset and progression of frequent chronic diseases [58]. The objective of the present paper is to describe the rationales and design of the oral examinations in the NAKO study. Furthermore, we refer to details about the recording of the dental interview, the dental and prosthetic status, coronal caries, periodontitis, temporomandibular disorders, and orthodontic measures. We describe the standardized data collection, the quality assurance measures undertaken, the data management, and we assess observer agreement and reliability using a reliability study. To provide an insight into the data, preliminary results for selected oral variables are presented.

Methods/design

Study design

The NAKO is a multidisciplinary, nationwide, multi-centre, population-based cohort study that aims to investigate the development and aetiology of diseases, identify risk factors and enhance early detection and prevention of diseases. To develop a notion of the required sample size, the following aspects had to be considered: i) enable the statistical analysis of a great variety of potential research questions, ii) balance the study size against the depth of phenotyping and detail of data collected, iii) allow the development of multivariable risk models, iv) for rarer forms of disease or pre-clinical phenotypes ‘make a meaningful contribution to international cohort consortia’.

A comprehensive description of the study population, its recruitment and the baseline examination and data collection of the NAKO study was published elsewhere [1]. Briefly, the study aimed to recruit 200,000 participants aged 20 to 69 years from the general population living in the adjacent areas of 18 study centres based on samples drawn randomly from municipal registries. A sex and age stratified sampling design was used, with equal balance among sexes, and 10.0% of participants in each 10-year age group from 20–39, and 26.7% in each 10-year age group from 40 to 69. The baseline study program included a standardized, computer-assisted face-to-face interview, biomedical examinations, self-report questionnaires, data from various imaging techniques (for example 3D ultrasound of the heart), collection of biosamples, and a whole-body MRI (30,000 participants). By design, data collection comprised two levels of intensity. The standard Level 1 program was offered to all participants. In addition, in-depth examinations were offered to 20% randomly selected participants (Level 2 program). Each study centre selected one of three modules (1 of 3 exam system) to be carried out in all Level 2 participants, while the other two modules were only performed in a subgroup of 100 participants. Some study centres chose 2 out of 3 modules and carried out each module on one-half of all Level 2 participants.

Between March 2014 and September 2019, a total of 205,184 persons aged 20–74 years were recruited and examined at 18 study centres (covering rural and urban regions) across Germany (Level 1 examinations), while 57,051 participants passed through Level 2 examinations. Differences to the number of participants reported in Peters et al. [1] can be explained by withdrawn consent after data transfer.

Oral examinations were included in both Level 1 (Supplemental Fig. 1A, C) and Level 2 examinations (Supplemental Fig. 1B, D; as part of the 1 of 3 exam system; Level 2 oral examinations were performed in eight centres and a reduced number of Level 2 oral examinations was performed in the remaining 10 centres). Examination protocols were developed to ensure a maximum compatibility with study protocols from other German studies (data pooling), namely the German Oral Health Studies (Deutsche Mundgesundheitsstudien) [59] and the Studies of Health in Pomerania [60].

Level 1 dental interview and oral examinations

A dental interview ($N=189,158$) was carried out by means of a touchscreen device using a combination of self-completion questions, including also the German Oral Health Impact Profile (OHIP-G5) questionnaire [61] in order to assess the OHRQoL (Table 1). The OHIP-G5 reflects the individual’s perception of oral health and its

Table 1 Overview on Level 1 dental questionnaire and examinations

Recordings/Question	Levels/possible answers
<i>Dental questionnaire</i>	
Has a dentist ever diagnosed you with periodontitis or periodontosis, i.e. inflammation of the periodontium?	Yes/ no/ don't know
Do you have a dental implant? (dental implants are screwed into the jaw)	Yes, upper jaw/ yes, lower jaw/ yes, upper and lower jaw/ no/ don't know
Do you have loose teeth??	Yes/ no
Do your gums bleed when brushing your teeth?	Yes/ no
<i>OHIP-G5: For each Oral Health Impact Profile (OHIP) question, participants were asked how frequently they had experienced the problem in the last month</i>	
Have you had painful aching in your mouth?	Never/ hardly ever/ occasionally/ fairly often/ very often
Have you felt uncomfortable about the appearance of your teeth, mouth dentures or jaws?	Never/ hardly ever/ occasionally/ fairly often/ very often
Have you felt that there has been less flavour in your food because of problems with your teeth, mouth, dentures or jaws?	Never/ hardly ever/ occasionally/ fairly often/ very often
Have you had difficulty doing your usual jobs because of problems with your teeth, mouth, dentures or jaws?	Never/ hardly ever/ occasionally/ fairly often/ very often
Have you had difficulty chewing any foods because of problems with your teeth, mouth, dentures or jaw?	Never/ hardly ever/ occasionally/ fairly often/ very often
<i>Dental examinations</i>	
Tooth count	Number of present teeth, including third molars
Number of removable dentures	No prosthesis/ one prosthesis/ two prostheses

impact on life on a multidimensional level considering biopsychosocial aspects related to oral health [62, 63].

Level 1 oral examinations were conducted in all participants ($N=189,205$) and included the counting of present teeth, including third molars (range 0–32 teeth). This included healthy teeth, teeth with carious lesions and teeth with fillings or crowns, but no dental implants. Furthermore, the number of removable full or partial dentures was documented. The reasons for non-feasibility were described (Table 1).

Level 2 oral examinations

In Level 2 (Table 2), conducted among a subgroup of participants ($N=20,943$), the tooth status (including caries status), prosthetic status, periodontal status, orthodontic and functional status, and temporomandibular disorders were recorded. The dentures were removed from the mouth before the oral examination. The participants were asked whether and, if so, at which position dental implants were located. The following examinations were carried out according to the halfmouth design. The respective jaw half (left or right side) was randomly assigned. All permanent teeth, including third molars, were examined. The Level 2 dental status was recorded using the ParoStatus software (ParoStatus.de GmbH, Berlin, Germany), with study-specific adjustments according to the Level 2 recording protocol. The recordings were registered web-based. A printed copy was also maintained as a backup.

Dental status

The tooth status was recorded independently of the tooth restoration and classified as follows: tooth extracted or not present; tooth present (a tooth was registered as healthy if there were no carious cavitated lesions or restorations; structural defects, cervical defects, abrasion, attrition and erosion of the teeth were not recorded; teeth with fissure sealings were also coded as healthy); implant; decayed tooth (decayed teeth were registered with primary or secondary caries at the cavitation level according to WHO criteria by visual inspection [64], confirmed by pressureless penetration of the rounded periodontal probe; root residuals were also documented in this category; non-cavitated carious lesions were assessed as healthy and were not recorded); examination was refused by participants or was not recordable.

Prosthetic status

The prosthetic status was recorded as follows: healthy or no prosthetic replacement or no restoration; fillings (all filled teeth were recorded here. Recording was performed independently of the filling material, e.g. amalgam, composite or cement, and independent of the tooth surface-specific extent or size; if there was a carious lesion at the edges of the filling or crown, this finding was registered separately in the "dental status" section); inlay, partial crown, crown or veneer (registration was carried out independently of the materials used, e.g. gold, ceramic, metal-ceramic, etc., and regardless of the extent and size); prosthodontic attachments, e.g. double crown,

Table 2 Overview on Level 2 dental examinations

Examination part	Dental examination/ Questions	Recordings	Examination level
Prosthetic status	Dental status	Tooth extracted or not present/ tooth present/ implant/ decayed tooth/ dental status examination refused or not feasible	Tooth
	Prosthetic status	Healthy or no prosthetic replacement or no restauration/ filling/ inlay, partial crown, crown or veneer/ prosthodontic attachments (e.g. double crown, crown with attachment for a removable denture, anchor)/ pontic/ tooth replaced by removable partial dentures/ examination refused or not feasible	Tooth
Prostheses	Prostheses in lower and upper jaw	no prosthetic reconstruction/ prosthesis retained by wrought-wire-claps or provisional prosthesis/ prosthesis retained by cast clasps/ prosthesis retained by telescopic crowns or precision attachments (telescopic/ conus/ double crown/ any kind of precision attachment)/ removable complete denture/ not assessable	Jaw
Periodontal status	Heart disease record card	Question: Do you have a heart disease record card? Possible answers: No/ yes/ don't know	Subject
	Periodontal pocket depths	Periodontal pocket depth in mm Examination refused/ Examination not feasible	Site; halfmouth; mesiobuccal and midbuccal sites
Orthodontic and functional status	Orthodontic treatment	Question: Do or did you have any kind of orthodontic treatment with braces? Possible answers: No (no treatment)/ at present/ before the age of 18/ after the age of 18/ don't know/ answer refused	Subject
	Pain	Question: Did you have pain in the face, in the jaw, or in front or behind your ears within the last months? Possible answers: Yes/ no/ don't know/ refused to answer	Subject
	Dislocation	Question: Have you ever had a dislocation of your lower jaw, so that you were not able to close your mouth? Possible answers: no/ yes/ don't know	Subject
	Jaw mobility	Active mouth opening in mm/ Examination refused/ Examination not feasible	Subject
	Jaw mobility	Maximum active mouth opening in mm Examination refused/ Examination not feasible	Subject
	Pain assessment	Pain during maximum active mouth opening assessments Joint pain – no/ yes, one the right side/ yes, on the left side/ yes, on both sides/ examination not feasible/ examination refused Muscle pain—no/yes, one the right side/ yes, on the left side/ yes, on both sides/ examination not feasible/ examination refused	Subject
	Overjet	Overjet in mm/ Examination refused/ Examination not feasible	Subject
	Overbite	Overbite in mm/ Examination refused/ Examination not feasible	Subject
	Muscle palpation	Palpation of Musculus masseter and Musculus temporalis on left and right side using a pressure algometer No pain/ mild pain/ moderate pain/ severe pain/ examination refused/ examination not feasible	Subject

crown with attachment for a removable denture, anchor, etc. (a simple wire clasp or model casting clasp was not registered here); pontic (if a tooth was lost and replaced by a fixed partial denture pontic); tooth replaced by a removable denture (denture sections without an artificial tooth were registered as missing); examination refused or not feasible (examination was refused by the participant or examination of the teeth was not possible, for example, due to limited mouth opening). Possible combinations of dental and prosthetic status are listed in Table 3.

Additionally, the presence of removable prosthetic dentures in the upper and lower jaw was documented

separately as no prosthetic reconstruction, prosthesis retained by wrought-wire-clasps or provisional prosthesis, prosthesis retained by cast clasps, prosthesis retained by telescopic crowns or precision attachments, removable complete denture, or not assessable (as a single category).

Periodontal status

Participants with a heart disease record card (for needed endocarditis prophylaxis) and participants who were not sure whether they had a heart disease record card were not periodontally examined. Probing depths (PD)

Table 3 Possible combinations of dental and prosthetic status

Dental status	Prosthetic status
Tooth extracted or not present	Healthy or no prosthetic replacement or no restoration Pontic Tooth replaced by removable denture
Tooth present	Healthy or no prosthetic replacement or no restoration Fillings Inlay, partial crown, crown, veneer Double crown, crown with attachment for a removable denture, anchor, etc
Implant	Healthy or no prosthetic replacement or no restoration Crown Double crown, crown with attachment for a removable denture, anchor, etc Tooth replaced by removable denture
Decayed tooth	Healthy or no prosthetic replacement or no restoration Fillings Inlay, partial crown, crown, veneer Double crown, crown with attachment for a removable denture, anchor, etc

were recorded at two sites (mesiobuccal and midbuccal) according to the half-mouth method (same side as dental status) including third molars. A 1 mm-scaled periodontal probe was used (PCP-UNC 15, Hu-Friedy, Chicago, IL, USA) with a force of approximately 0.25 N. PD represents the distance between the free gingival margin and the pocket base. Measurements were down rounded to the nearest millimetre and recorded in full millimetres.

Functional and orthodontic status

First, the participant was asked about any previous or current orthodontic treatment with braces (and the time of treatment) and about possible pain in the facial area (Table 2). Then, the functional status for jaw mobility or mouth opening was examined in all participants, including edentates. Participants with a known tendency to dislocate the temporomandibular joint were excluded from jaw mobility examinations, which included the active mouth opening and the maximum active mouth opening. Participants were asked to open their mouth as much as possible on their own without provoking pain. The examination was not recorded if the participant was edentulous in the anterior region and did not wear prostheses. While the participants keep their mouth open, the distance between the upper and lower incisal edges of the central incisors was documented in full millimetres. Afterwards, the maximum active mouth opening was measured. The participant was asked to open the mouth as wide as possible, even if he was in pain. Again, the distance between the upper and lower incisal edges of the central incisors was documented as described above. The participant was then asked whether and where (left or right side) they felt muscle or joint pain at maximum

active mouth opening. Overjet and overbite were measured with a ruler in full millimetres.

Finally, bilateral muscle palpation of the masseter and temporalis muscles was performed using a pressure algometer (Wagner Force Ten FDX Compact, Wagner Instruments, Greenwich, CT, USA) with a standardized force. The application force of the pressure algometer was increased within 1–2 s to the intended strength of 4.5 Newton. After each measurement, the participant was asked about possible pain (recorded as no, mild, moderate or severe pain). The variable ‘palpation’ was coded as yes if mild, moderate or severe pain was registered for at least one of the four positions palpated with the pressure algometer (Musculus masseter and Musculus temporalis on the left and right side); otherwise coded as ‘no’.

Saliva sampling

A stimulated saliva sample was taken from all participants using a paraffin gum (1 g paraffin, GC Germany GmbH, Bad Homburg vor der Höhe, Germany). The last meal and/or drink should have been at least 30 min ago. The participants were asked to rinse the oral cavity at least 10 min with 0.2 ml of tap water before the saliva sampling. The participants were motivated to actively chew the paraffin to stimulate salivation. During one minute, the saliva was continuously spat into a collection cup. When the amount of saliva after one minute was less than 0.9 ml, the participant was asked to chew the paraffin chewing gum for a further minute and saliva was collected. For storage, the collected saliva was aliquoted into two cryotubes with a capacity of 500 µl each. The samples were immediately coded and temporarily stored in

dry ice. Until the end of the day, cryotubes were frozen at -80°C [58].

Quality assurance measures

Numerous measures were implemented to assure the high-quality standards for oral examinations [65], including intensive theoretical and practical training of all study nurses by an experienced dentist (J.K.). Qualified study nurses had to fulfil a number of specific conditions: i) successful participation at a theoretical and a practical training course, ii) correct implementation of the specific dental standard operating procedure (SOP), iii) successful certification and, if applicable, re-certification (S.S.; S.R.) at regular intervals, and iv) completion of required site visits. A dental advisor (a dentist) was appointed for each Level 2 centre to act as a contact person and dental trainer. All certified trainers were familiar with the SOP, had completed a certification workshop and had participated in regular working group meetings every two years. The detailed SOPs with appendices and hand books are available on request.

Data processing

Personal data were processed according to the concept on data privacy protection and IT development for the NAKO [1, 66]. The Independent Trust Centre curates all IDs and stored informed consents. The dental data quality control and plausibility checks have been processed by the dental working group. Data were directly integrated in two data integration centres, one at the University Medicine Greifswald for the northern study centres and one at the German Cancer Research Centre (DKFZ) for the southern study centres in Germany [58, 65, 67].

Data plausibility and completeness

After completion of the data collection, the data was subsequently checked and extensively corrected as part of quality assurance. The corrected data is made available for all subsequent data usage applications. First, the data was corrected according to the comments entered by the examiners during the dental examination (including, for example, input corrections). Second, to identify implausible values, various plausibility checks were performed: implausible combinations (for example, a high number of present teeth and the presence of 1 or more prostheses; Level 1) were identified for future applications for data use and recommendations for data processing were given. For orthodontic measurements, plausibility limits were defined and measurements outside limit ranges were set to missing (overbite: $[-20; 20]$; overjet $[-50; 50]$; (maximum) active mouth opening $[0; 100]$). Detailed quality assurance reports are available on request.

Reliability study

We performed a reliability study, in which 6,000 NAKO participants were re-examined after on average 270 days ($N=794$; standard deviation (SD) 82.7; range 35–434) and 274 days ($N=359$; SD 80.5; range 49–434) for Level 1 and Level 2 examinations, respectively. We calculated intra class correlation coefficients (ICCs; using single and average measures, as appropriate), percentage agreement, and kappa coefficients for Level 1 and Level 2 examinations restricting measurement pairs to those done by the same examiner at both time points (minimum number of observations per group set to 30).

Statistical methods

For Level 2 participants maximum PD and mean PD were calculated, considering all available site measurements (28 at maximum). The Decayed Teeth (DT) index, the Filled Teeth (FT) index, the Decayed Filled Teeth (DFT) index, and the Decayed Missing Filled Teeth (DMFT) index were determined (half-mouth, excluding third molars; range 0–14).

For continuous data, means \pm standard deviations and medians (25% and 75% quantiles) were presented. Numbers (percentages) were shown for categorical data.

Marginal means and locally estimated scatterplot smoothing (LOESS) plots were assessed for Level 1 tooth counts and Level 2 mean PD, the DFT Index, and the active mouth opening distance. The dataquiere package (version 2.0.1) was used in R 4.3.2 to compute marginal plots (using the `acc_margins` function) and LOESS plots (using the `acc_loess` function) [68]. For marginal plots, adjusted marginal means were calculated using equally weighted marginal effects of the factor-variable 'study centre'. For each level of 'study centre', marginal means were calculated including 95% confidence intervals. Marginal distributions were plotted together with box plots combined with violin plots, or with count plots. Also, the overall mean and the overall deviation from the mean (± 1 standard deviation) are displayed. In case of oddities the marginal mean is displayed in red.

LOESS was conducted to examine the impact of 'study centre' on the measurements over time [69]. If a fitted curve exceeds the confidence band of dashed red lines of the overall distribution a severe shift is observed, indicating persistent trends. In case of persistent trends in selected levels of 'study centre', systematic changes in measurements over time would be implied.

From the reliability study, repeatedly measured data of both Level 1 and Level 2 dental status were used to assess observer agreement and reliability. Value pairs for (maximum) active mouth opening were restricted to those with an absolute difference of less than 20 to

avoid excessive differences between repeated measurements due to entry errors. Likewise, value pairs for overjet and overbite were restricted to those with an absolute difference of less than 10. For continuous measurements intra class correlation coefficients (ICCs, with 95% confidence intervals; CI) were assessed. For categorical variables, agreement and kappa (with standard errors; SE) were calculated. For palpation variables, only % agreement was reported because kappas could not be determined as palpation variables were scored zero in most data pairs (> 98%).

Results

Study participants

The age distribution of the total population, including the 205,184 participants, was as follows: 19,983 people (9.7%) aged 19–29 years, 21,684 (10.6%) aged 30–39 years, 53,232 (25.9%) aged 40–49 years, 55,013 (26.8%) aged 50–59 years and 55,272 (26.9%) aged 60–75 years. Flow charts for the derivation of study participants for Level 1 examinations (interview and oral examination) and Level 2 examinations (dental/prosthetic status, probing depths, orthodontics, palpation) are shown in Figs. 1 and 2.

Marginal means and monitoring of measurements over time by study centre

Marginal means plots identified no systemic outliers across study centres for tooth counts, the DFT index and the active mouth opening distance (Fig. 3). For mean PD, the marginal mean for one study centre was higher compared to all other study centres and above confidence limits. LOESS plots (Figs. 4 and 5) did not identify systematic trends over time within study centres. Furthermore, each of the study centre specific LOESS curves were not separated from LOESS curves of the other study centres.

Reliability using repeated measures from the reliability study

Level 1 oral examination

Results from the reliability study are presented in Table 4. For the number of prostheses, kappa for repeated measurement was 0.92 (SE 0.03). The ICC for the number of teeth including third molars was 0.94 (95% CI: 0.93, 0.95).

Level 2 oral examination

For the dental and the prosthetic status (tooth level data) intra class kappa was 0.88 (SE 0.01) and 1.00 (SE 0.01), respectively. For probing depths (site level) the intra

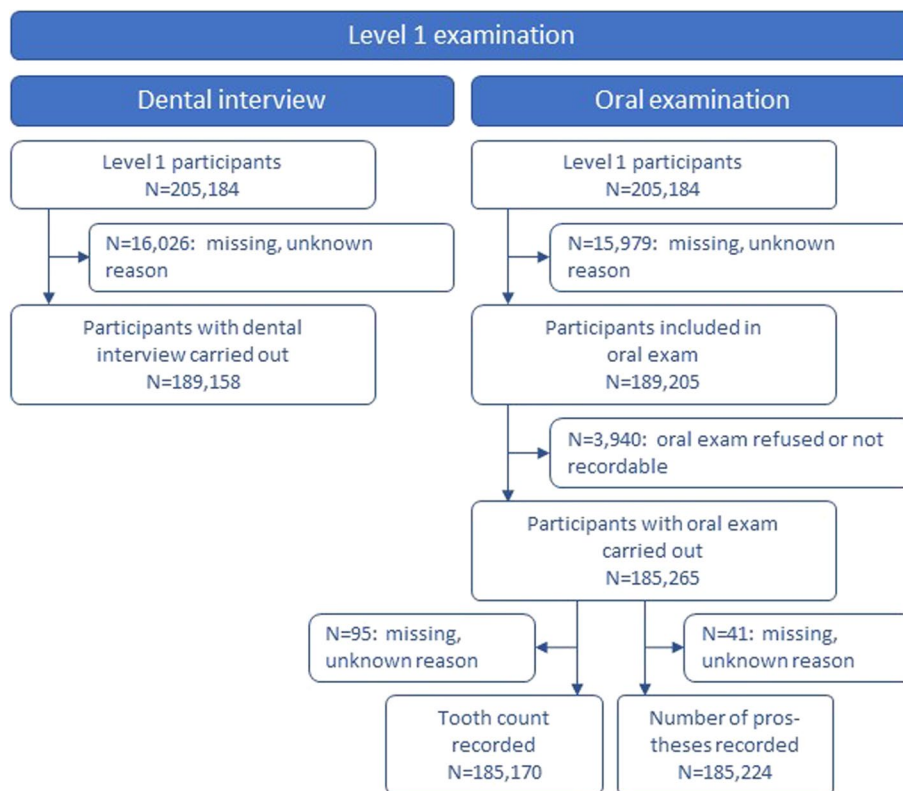


Fig. 1 Flowchart for the Level 1 dental interview and oral examination data

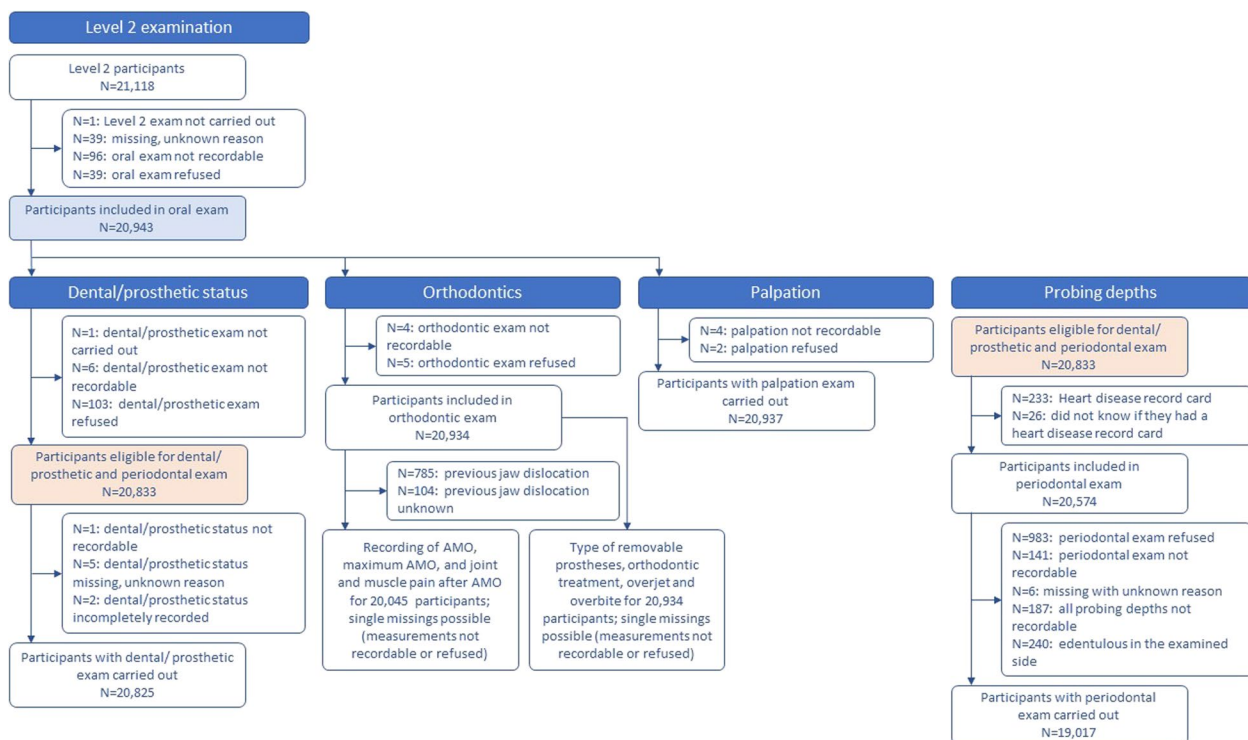


Fig. 2 Flowchart for the Level 2 examination (dental/prosthetic status, orthodontics, palpation, and probing depths)

class ICC (average rater) was 0.74 (95% CI: 0.73, 0.75). For assessments of the type of removable prostheses in the upper and lower jaw, intra class kappas were 0.75 and 0.78, respectively. For assessments of active mouth opening, maximum active mouth opening, overjet and overbite, intra class ICCs were 0.80 (95% CI: 0.75, 0.83), 0.91 (95% CI: 0.89, 0.93), 0.88 (95% CI: 0.85, 0.90), and 0.79 (95% CI: 0.74, 0.82), respectively. For palpation variables, intra class percentages of agreement ranged between 96.4 and 98.9%.

Distribution of oral health related variables

Level 1 dental interview

Dental interview data were recorded in 205,184 participants at the time of data transfer. The proportion of missing values varied across dental interview items (around 8%). Thirty percent reported a diagnosis of periodontitis, 5.9% reported to have loose teeth, and 16.7% reported to have bleeding gums (Table 5). Dental implants, either in the lower and/or the upper jaw, were reported in 14.4% of participants. According to OHIP questions (counting very often, often or occasionally; referring to problems with the teeth, mouth, dentures or jaw within that last months), 1.9% reported painful aching, 10.1% felt uncomfortable about the appearance, 2.4% reported less flavour

in their food, 1.8% reported difficulties doing their usual jobs, and 8.6% reported difficulties in chewing.

Level 1 oral examination

The median number of present teeth was 27 (25% quantile: 25; 75% quantile: 28; Table 6). A removable denture in one jaw was documented in 9,965 (5.4%) and in both jaws in 10,244 (5.5%) participants.

Level 2 oral examination

Oral examinations were performed halfmouth (Table 6): 37.9% on the left and 62.1% on the right side (due to technical problems at the beginning). The dental status was recorded in 20,825 participants. On tooth level, 63,711 teeth (19.1%) were found to be extracted or not present; at 2,633 (0.8%) of all tooth positions implants were registered. Caries was registered for 1,488 teeth (0.4%). At the subject level, an average of 6.9 teeth (SD 3.6) were healthy and caries-free, 0.1 teeth (SD 0.4) were decayed, 5.3 teeth (SD 3.0) were filled and 1.7 teeth (SD 2.7) were missing. The average DMFT Index was 7.1 (SD 3.6).

PD values ranged between 0 and 15 mm. Mean PD was 1.92 mm on average (SD 0.70). Maximum PD was 3.35 mm on average (SD 1.49). A removable denture in the lower and upper jaw was registered in 7.7% and 6.2%, respectively. An orthodontic treatment was reported by

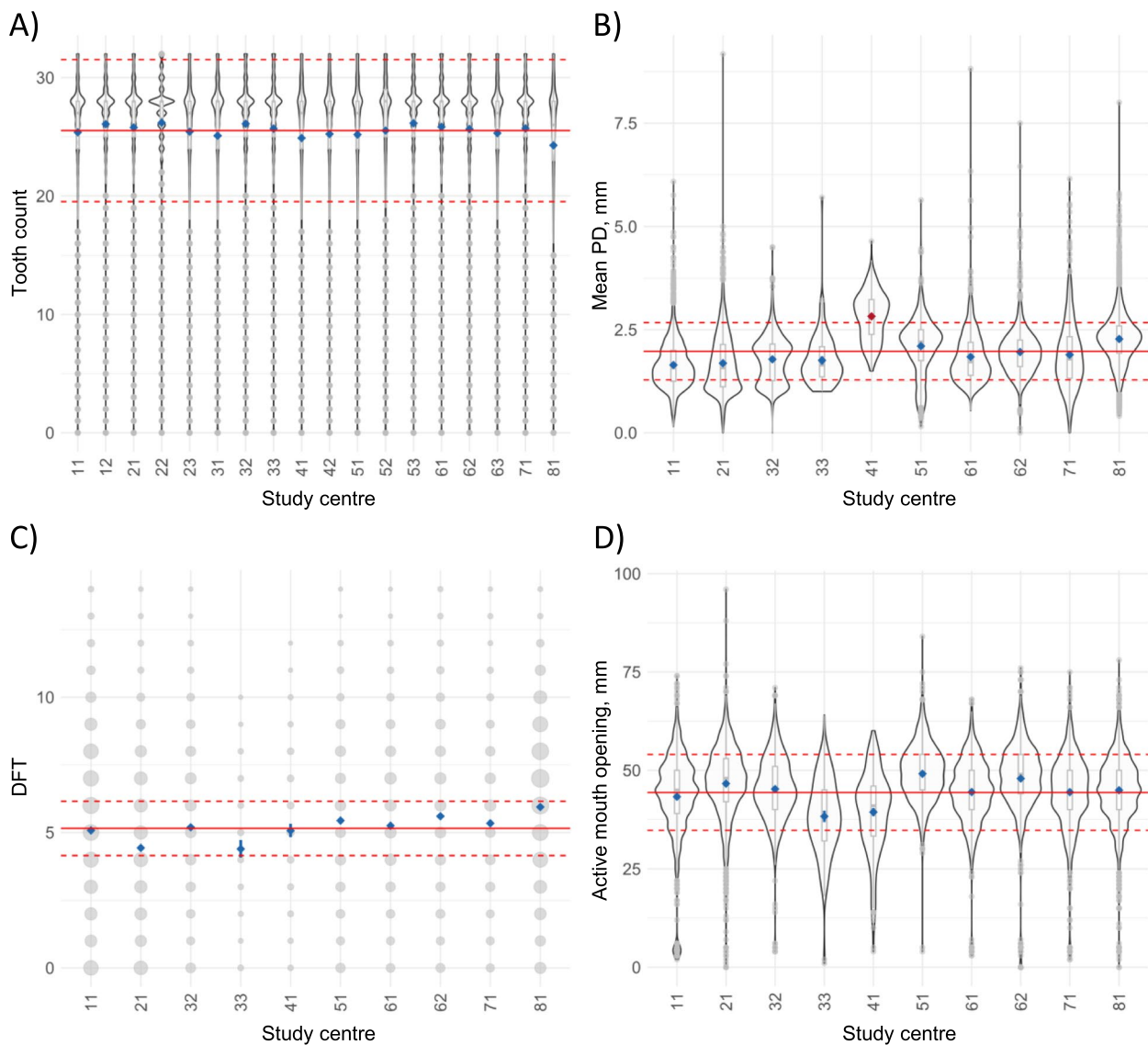


Fig. 3 Study centre margins (blue) for **A**) full-mouth tooth counts (including third molars; Level 1), **B**) mean probing depth (PD), **C**) the Decayed-Filled-Teeth (DFT) Score and **D**) the active mouth opening distance (Level 2) after adjustment for age and sex using statistical models. Marginal distributions (using box plots combined with violin plots, or count plots) are additionally shown. Also, the overall mean (red solid line) and the deviation from the mean (± 1 standard deviation; red dashed lines) are displayed. In case of oddities the marginal mean is displayed in red

35.5% of participants. The average overbite was 3.4 mm (SD 2.2) and the average overjet was 3.1 mm (SD 3.1). The average active mouth opening distance was 45.2 mm (SD 10.1).

Discussion

This report describes the study protocol, the standardized recording of the oral examination, and some preliminary results from the NAKO, a multicentre, population-based epidemiologic cohort study of 205,184 women and men, covering a wide age range (19–74 years). The results of

the data quality assessments and the plausibility of the collected data demonstrated that the oral examination protocol was well implemented. Data quality was assessed by observer agreement and reliability measures derived from a reliability study and close data monitoring, as in other epidemiologic studies with oral examination components, such as the German Oral Health Studies [70] or the Studies of Health in Pomerania [60]. Furthermore, by ensuring a maximum compatibility of the study protocol with other European studies (data pooling), the NAKO offers an approach for linking the

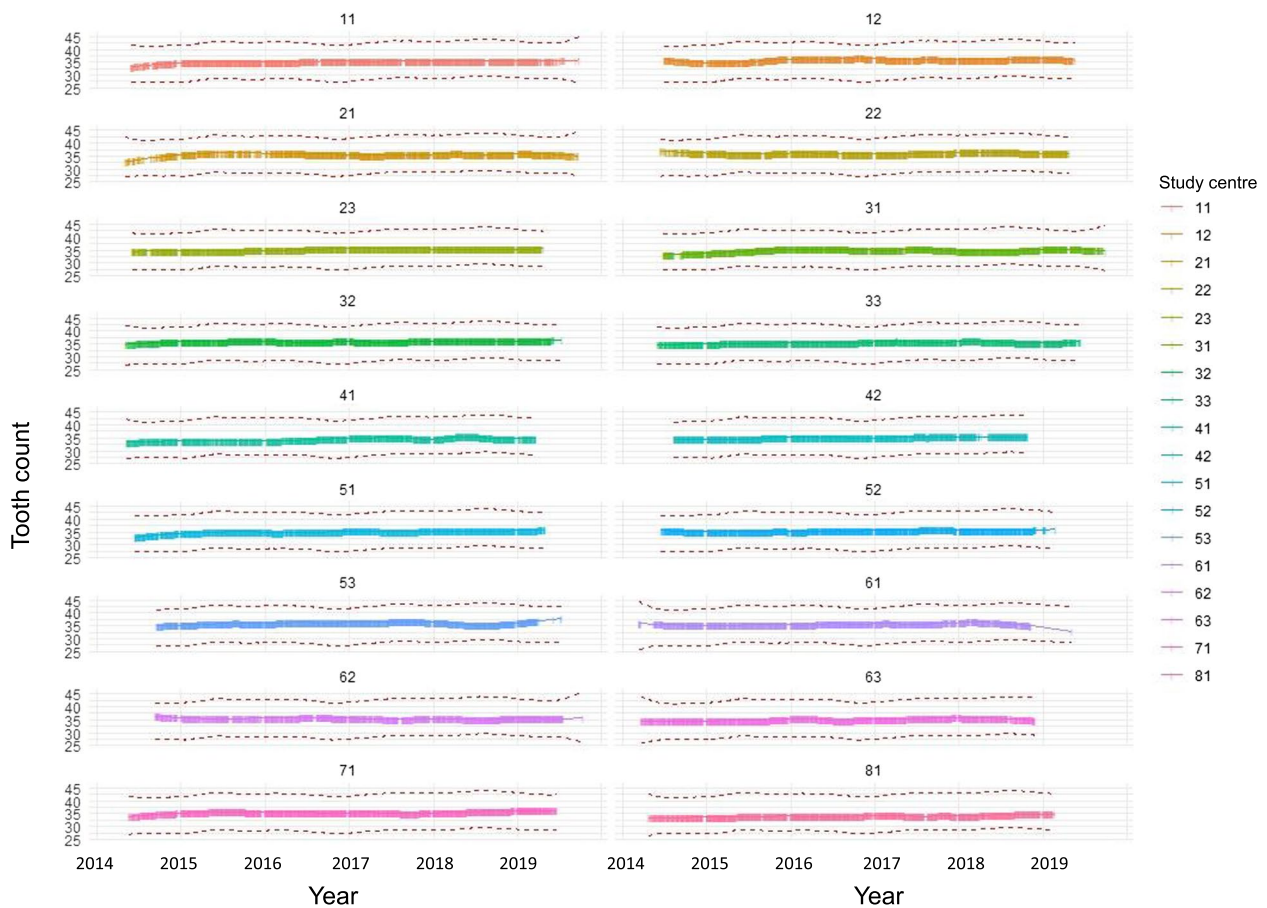


Fig. 4 LOESS-smoothed curves for each study centre for full-mouth tooth counts (including third molars; Level 1) after adjustment for age and sex using statistical models

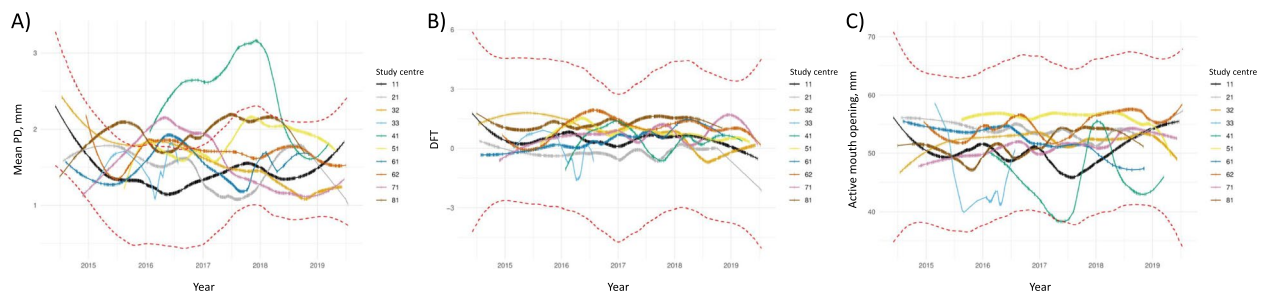


Fig. 5 LOESS-smoothed curves for each study centre for **A**) mean probing depth (PD), **B**) the Decayed-Filled-Teeth (DFT) Score and **C**) the active mouth opening distance (Level 2) after adjustment for age and sex using statistical models. The red dashed lines represent the confidence interval of a LOESS curve for the whole data

study with other studies, for example the German Oral Health Studies (Deutsche Mundgesundheitsstudien), the Studies of Health in Pomerania, or the Hamburg City Health Study [71].

Both in Level 1 and Level 2 participants, comprehensive oral examination data were recorded by regularly trained, calibrated, and certified study nurses using

standardized protocols, requiring extensive coordination at the expert level. The enormous quality assurance effort was well reflected in i) good to excellent reliability of dental measurements and ii) non-presence of systemic effects of examiner and centre on oral measurements. First, using repeatedly collected data from the reliability study, good to excellent reliability was shown (excluding

Table 4 Results from the reliability study: intra class correlation (ICCs) and kappa coefficients for Level 1 and Level 2 examinations restricting measurement pairs to those done by the same examiner at both time points

	Level of analysis	N obs	Measure for ICCs	ICC (95% CI)	Agreement, %	Kappa (SE)
Level 1 examinations						
Number of prostheses (0/1/2)	Subject	783	-	-	98.7%	0.92 (0.03)
Number of teeth, incl. third molars	Subject	794	Single	0.94 (0.93, 0.95)	-	-
Level 2 examinations						
Dental status	Tooth	4,956	-	-	97.4%	0.88 (0.01)
Prosthetic status	Tooth	4,956	-	-	100.0%	1.00 (0.01)
Probing depth, mm	Site	7,731	Average	0.74 (0.73, 0.75)		
Prostheses in upper jaw	Subject	359	-	-	96.1%	0.75 (0.03)
Prostheses in lower jaw	Subject	359	-	-	97.8%	0.78 (0.04)
Active mouth opening, mm	Subject	318	Single	0.80 (0.75, 0.83)	-	-
Maximum active mouth opening, mm	Subject	321	Single	0.91 (0.89, 0.93)	-	-
Overjet, mm	Subject	333	Single	0.88 (0.85, 0.90)	-	-
Overbite, mm	Subject	339	Single	0.79 (0.74, 0.82)	-	-
Palpation of the right temporalis muscle	Subject	359	-	-	97.8%	ND
Palpation of the right masseter muscle	Subject	359	-	-	96.4%	ND
Palpation of the left temporalis muscle	Subject	359	-	-	98.9%	ND
Palpation of the left masseter muscle	Subject	359	-	-	96.7%	ND

For palpation variables, only % agreement was reported because kappas could not be determined (ND, not determined)

Abbreviations: ICC intra class correlation coefficient, N obs. number of observations, CI confidence interval, SE standard error

Table 5 Results of the responses to the dental interview questions (N = 205,184)

Item	Diagnosis of periodontitis or periodontosis	Loose teeth	Bleeding gums	Dental implants	
Answers					
Yes	61,537 (30.0%)	12,163 (5.9%)	34,329 (16.7%)	No	156,834 (76.4%)
No	98,073 (47.8%)	173,130 (84.4%)	154,626 (75.4%)	Yes, in upper jaw	12,270 (6.0%)
Don't know	29,438 (14.3%)	1 (0.0%)	0 (0%)	Yes, in lower jaw	10,389 (5.1%)
				Yes, in upper and lower jaw	6,771 (3.3%)
				Don't know	2,753 (1.3%)
Missings					
Not specified	94 (0.1%)	99 (0.1%)	96 (0.1%)	Not specified	93 (0.1%)
Module missing	16 (0.01)	3,765 (1.8%)	107 (0.1%)	Module missing	48 (0.02%)
Item missing	16,026 (7.8%)	16,026 (7.8%)	16,026 (7.8%)	Item missing	16,026 (7.8%)
Item					
	OHIP-G5: Painful aching	OHIP-G5: Uncomfortable about appearance	OHIP-G5: Less flavour in your food	OHIP-G5: Difficulty doing your usual jobs	OHIP-G5: Difficulty chewing
Answers					
Very often	1,235 (0.6%)	2,074 (1.0%)	532 (0.3%)	426 (0.2%)	1,543 (0.8%)
Fairly often	2,655 (1.3%)	3,834 (1.9%)	958 (0.5%)	691 (0.3%)	2,981 (1.4%)
Occasionally	20,411 (9.9%)	14,790 (7.2%)	3,332 (1.6%)	2,591 (1.3%)	13,123 (6.4%)
Hardly ever	44,918 (21.9%)	26,014 (12.7%)	9,822 (4.8%)	7,436 (3.6%)	20,164 (9.8%)
Never	119,647 (58.3%)	142,139 (69.3%)	174,190 (84.9%)	177,676 (86.6%)	151,005 (73.6%)
Don't know	1 (0.0%)	1 (0.0%)	1 (0.0%)	2 (0.0%)	3 (0.0%)
Missings					
Not specified	96 (0.1%)	92 (0.04%)	91 (0.04%)	93 (0.1%)	93 (0.1%)
Module missing	194 (0.1%)	213 (0.1%)	231 (0.1%)	242 (0.1%)	245 (0.1%)
Item missing	16,027 (7.8%)	16,027 (7.8%)	16,027 (7.8%)	16,027 (7.8%)	16,027 (7.8%)

Abbreviations: OHIP-G5 Oral Health Impact Profile German 5 (including 5 questions)

Table 6 Descriptive results for level 1 and level 2 dental examinations at baseline of the German National Cohort (NAKO)

	N	Descriptive data	
		Mean \pm SD Median (Q25%; Q75%)	N (%)
Level 1 examinations (fullmouth)			
Number of present teeth (including third molars)	185,170	25.5 \pm 6.0 27 (25; 28)	
Number of prostheses	185,224		
0			165,015 (89.1%)
1			9,965 (5.4%)
2			10,244 (5.5%)
Level 2 dental/prosthetic status (halfmouth)			
Examined quadrants	20,833		
Left			7,892 (37.9%)
Right			12,941 (62.1%)
Dental status (tooth level)	333,745		
Tooth extracted or not present			63,711 (19.1%)
Tooth present			264,913 (79.5%)
Implant			2,633 (0.8%)
Decayed tooth			1,488 (0.4%)
Missing			503 (0.2%)
Number of teeth	20,825	12.3 \pm 2.7 13 (12; 14)	
Healthy caries-free teeth (excl. third molars)	20,825	6.9 \pm 3.6 7 (4; 9)	
DT Index (excl. third molars)	20,825	0.1 \pm 0.4 0 (0; 0)	
FT Index (excl. third molars)	20,825	5.3 \pm 3.0 5 (3; 7)	
DFT Index (excl. third molars)	20,825	5.4 \pm 3.0 6 (3; 8)	
MT Index (excl. third molars)	20,825	1.7 \pm 2.7 1 (0; 2)	
DMFT Index (excl. third molars)	20,825	7.1 \pm 3.6 7 (5; 10)	
Level 2 Probing depths (halfmouth)			
Probing depth, mm (site level)	490,346	1.9 \pm 1.0 2 (1; 2)	
Mean probing depth, mm (subject level)	19,017	1.91 \pm 0.71 1.88 (1.39; 2.33)	
Maximum probing depth, mm (subject level)	19,017	3.29 \pm 1.45 3 (2; 4)	
Level 2 Orthodontics			
Type of removable prosthetic restoration in lower jaw	20,934		
No prosthetic reconstruction			19,194 (91.7%)
Prosthesis retained by wrought-wire-claps or provisional prosthesis			272 (1.3%)
Prosthesis retained by cast claps			528 (2.5%)
Prosthesis retained by telescopic crowns or precision attachments			584 (2.8%)
Removable complete denture			210 (1.0%)
Not assessable			146 (0.7%)
Type of removable prosthetic restoration in upper jaw	20,934		
No prosthetic reconstruction			19,533 (93.3%)
Prosthesis retained by wrought-wire-claps or provisional prosthesis			234 (1.1%)
Prosthesis retained by cast claps			437 (2.1%)

Table 6 (continued)

	N	Descriptive data	
		Mean ± SD Median (Q25%; Q75%)	N (%)
Prosthesis retained by telescopic crowns or precision attachments			512 (2.5%)
Removable complete denture			107 (0.5%)
Not assessable			111 (0.5%)
Orthodontic treatment	20,665		
No			13,349 (64.5%)
Now			60 (0.3%)
Yes, before the age of 18			6,495 (31.4%)
Yes, after the age of 18			409 (2%)
Yes, before the age of 18 and now			11 (0.05%)
Yes, after the age of 18 and now			6 (0.03%)
Yes, before and after the age of 18			283 (1.4%)
Yes, before and after the age of 18 and now			11 (0.05%)
Don't know			41 (0.02%)
Overbite, mm	20,182	3.4 ± 2.02 3 (2; 5)	
Overjet, mm	20,104	3.1 ± 3.1 3 (2; 4)	
Active mouth opening, mm	19,808	45.2 ± 10.1 46 (40; 51)	
Maximum active mouth opening, mm	19,734	50.7 ± 8.4 51 (46; 56)	
Level 2 Palpation			
Palpation of the right Musculus temporalis	20,937		
No pain			20,584 (98.3%)
Mild pain			116 (0.55%)
Moderate pain			20 (0.1%)
Severe pain			13 (0.1%)
Not assessable			156 (0.75%)
Answer refused			48 (0.2%)
Palpation of the right Musculus masseter	20,937		
No pain			20,456 (97.7%)
Mild pain			215 (1.0%)
Moderate pain			56 (0.3%)
Severe pain			10 (0.05%)
Not assessable			153 (0.7%)
Answer refused			47 (0.2%)
Palpation of the left Musculus temporalis	20,936		
No pain			20,590 (98.4%)
Mild pain			108 (0.5%)
Moderate pain			32 (0.1%)
Severe pain			8 (0.04%)
Not assessable			152 (0.7%)
Answer refused			46 (0.2%)
Missing			1 (0.0%)
Palpation of the left Musculus masseter	20,937		
No pain			20,456 (97.7%)
Mild pain			214 (1.0%)
Moderate pain			56 (0.3%)

Table 6 (continued)

	N	Descriptive data	
		Mean \pm SD Median (Q25%; Q75%)	N (%)
Severe pain			11 (0.05%)
Not assessable			155 (0.7%)
Answer refused			45 (0.2%)
Palpation over all four positions	20,735		
No			20,163 (97.2%)
yes (mild, moderate or severe pain for at least one position)			572 (2.8%)

Abbreviations: N number, % percentage, Q25% 25% quantile, Q75% 75% quantile, SD standard deviation

examiners with less than 30 observations; Table 4). It is important to note that as baseline and reliability study examinations were on average 270 days apart, reliability measures in this study reflect both, changes in the dental and/or periodontal status (be it natural changes or changes due to therapies) as well as intra-rater measurement error. Thus, we assume that our reliability estimates are conservative and that the true reliability is higher (i.e., measurement error is lower). However, it should be noted that although the dental examiners were trained and process calibrated by professional dentists before and during data collection, validity was not assessed against a gold standard. Second, measurements were monitored over time and by study centre (Figs. 3, 4 and 5). Marginal means plots did not show systematic deviations for any of the dental variables. Several conclusions can be deduced from LOESS plots (Figs. 4 and 5). Firstly, no systematic trends over time were identified. Secondly, no persistent trends in selected levels of 'study centre' were detected, implying no systematic changes in measurements over time. Thirdly, as complete separation of the LOESS curve for one study centre compared to all other study centres was not apparent, systematic differences in measurements, which are independent of time, were unlikely. Taken together, the quality measures implemented ensured the high quality of the data.

The standardized protocols for conducting Level 1 and Level 2 oral examinations served as essential tools to achieve harmonization across study sites. In conjunction with training courses and web seminars conducted by certified dentists, the manual played a key role in enabling study nurses without formal dental training to systematically collect pertinent dental observations. This holistic approach facilitated the effective implementation of a multifaceted interdisciplinary oral examination program within the NAKO by competent non-dental personnel. As a result, the assessment of dental, periodontal, and oral health status was uniformly standardized, along with cariologic, orthodontic, and functional assessments.

The comprehensive oral examination facilitates the assessment of dental and oral health in different age groups of the German population. By scheduling a follow-up examination of participants, incidence estimates can be derived for periodontitis, dental caries, and newly placed prosthetic restorations. This capability is particularly unique due to the prospective and longitudinal nature of the cohort design, a feature currently observed in only a limited number of large-scaled studies. The comprehensive and interdisciplinary nature of the investigations allows dental findings to be contextualized within the broader medical landscape. This is particularly interesting for parameters such as number of teeth and oral hygiene status, both of which can serve as indicators of individual health practices. Furthermore, the combination of Level 1 and Level 2 dental data with information from comprehensive computerized interviews and various medical examinations, including data from various imaging techniques (for example, magnetic resonance imaging) and biospecimens, allows for the evaluation of potential associations between oral diseases, specifically periodontitis, and various systemic conditions and diseases using advanced measurement techniques. Also, assessment of the functional status allows for collaborative interdisciplinary analyses with orthopaedic specialists, for example. Taken together, this results in a wide range of analysis options.

One important methodological consideration should be noted when interpreting the Level 2 data. Given the impracticality and cost constraints associated with the comprehensive analysis of all teeth, assessments of tooth status, caries presence, restoration status, and probing depth were performed on either the left or right side of the mouth. This approach is justified by the assumption of a symmetric intraoral distribution of caries and probing depths [72–74], thus preserving the validity of the results. However, it is important to recognize that partial diagnosis may lead to underestimation of periodontal prevalence and severity [75, 76].

In addition, the use of risk models may attenuate effect estimates, potentially biasing associations toward the null [77]. It is also pertinent to note that due to a software documentation error, the randomized selection of the oral hemisphere did not begin until May 2016, with only the right side being used prior to that. However, given the expectation of minimal asymmetry at the level of the jaw [72–74], the validity of the results remains unaffected by this procedural change.

The collection of dental data in the NAKO provides a solid foundation for dental epidemiologic research. The collaboration of different dental health research centres, the nationwide recruitment of survey participants, and the use of established standardized examination protocols facilitate comparisons with large-scale international cohort studies. Thus, there is a strong potential to analyse associations of oral diseases and various medical conditions and diseases in order to develop new strategies for prevention, early detection and risk stratification.

Abbreviations

AMO	Active Mouth Opening
CI	Confidence Interval
DT	Decayed Teeth
DFT	Decayed Filled Teeth
DKFZ	German Cancer Research Centre
DMFT	Decayed Missing Filled Teeth
DMS	Deutsche Mundgesundheitsstudien
FT	Filled Teeth
ICC	Intra-rater Correlation Coefficients
LOESS	Locally estimated scatterplot smoothing
NAKO	German National Cohort, NAKO Gesundheitsstudie
OHIP-G5	German Oral Health Impact Profile
OHRQoL	Oral Health-Related Quality of Life
PD	Probing depth
SD	Standard deviation
SE	Standard error
SOP	Standard Operating Procedure

Supplementary Information

The online version contains supplementary material available at <https://doi.org/10.1186/s12903-025-05454-z>.

Supplementary Material 1.

Acknowledgements

We thank all participants who took part in the NAKO study and the staff of this research initiative.

Authors' contributions

S.S., K.B., K.H., S.R., and B.H. drafted the manuscript. G.A., A.C., H.F., D.H., J.K., M.R., S.E.B., S.L.R., T.S.K., T.K., W.A., H.B., C.E., B.F., A.F., H.G., J.G., K.G., V.H., S.J., A.K., T.Ke., Y.K., A.K., L.K., O.K., M.L., C.M.F., K.B.M., N.O., N.P., T.P., Sa.S., B.S., H.T., A.P. substantially revised the manuscript. K.H., G.A., J.K., T.S.K., T.K., S.R. contributed to the conception or design of the work. S.S., K.B., K.H., G.A., A.C., H.F., D.H., J.K., M.R., S.E.B., S.L.R., T.S.K., T.K., S.R., B.H., W.A., H.B., C.E., B.F., A.F., H.G., J.G., K.G., V.H., S.J., A.K., T.Ke., Y.K., A.K., L.K., O.K., M.L., C.M.F., K.B.M., N.O., N.P., T.P., Sa.S., B.S., H.T., A.P. contributed to the acquisition, analysis, or interpretation of data. All authors read and approved the final manuscript and agreed to be accountable for all aspects of the work in ensuring that questions related to the accuracy or integrity of any part of the work are appropriately investigated and resolved.

Funding

Open Access funding enabled and organized by Projekt DEAL. This project was conducted with data from the German National Cohort (NAKO) (www.nako.de). The NAKO is funded by the Federal Ministry of Education and Research (BMBF) [project funding reference numbers: 01ER1301A/B/C, 01ER1511D and 01ER1801A/B/C/D], federal states of Germany and the Helmholtz Association, the participating universities and the institutes of the Leibniz Association.

Data availability

Data of the NAKO are generally not available to the public due to strict data protection regulations. However, scientists can apply for data use according to the official usage regulation specifications. Please refer to <https://transfer.nako.de> for further information.

Declarations

Ethics approval and consent to participate

All procedures performed involving human participants were in accordance with the ethical standards of the institutional and/or national research committee and is in accordance with national law and with the Declaration of Helsinki of 1975 (in the current, revised version). The research protocol was approved by the Ethics Committee of the Medical Faculty of the Ludwig-Maximilians-University of Munich / Bayerische Landesärztekammer; Nr. 13023) and all other local Ethics Committees of the study centres. Written informed consent was obtained from all individual participants included in the study.

Consent for publication

Not applicable.

Competing interests

The authors declare no competing interests.

Author details

¹Department of Prosthetic Dentistry, Gerodontology and Biomaterials, University Medicine Greifswald, Greifswald, Germany. ²Department of Periodontics, Preventive and Restorative Dentistry, Centre for Dental and Oral Medicine, University Medical Centre Hamburg-Eppendorf, Hamburg, Germany. ³Department of Oral and Maxillofacial Surgery, University Hospital Schleswig-Holstein, Kiel, Germany. ⁴Section of Periodontology, Department of Conservative Dentistry, Clinic for Oral, Dental and Maxillofacial Diseases, Heidelberg Faculty of Medicine, Heidelberg University, Heidelberg, Germany. ⁵Department of Orthodontics, University Hospital, Tübingen, Germany. ⁶Clinic for Periodontology and Conservative Dentistry, University of Münster, Münster, Germany. ⁷Department of Conservative Dentistry and Periodontology, Ludwig-Maximilians-University Hospital, Ludwig-Maximilians-University Munich, Munich, Germany. ⁸Institute of Health Services Research in Dentistry, University of Münster, Münster, Germany. ⁹Department of Restorative Dentistry, Periodontology and Endodontology, University Medicine Greifswald, Greifswald, Germany. ¹⁰Leibniz Institute for Prevention Research and Epidemiology – BIPS, Bremen, Germany. ¹¹Division of Clinical Epidemiology and Aging Research, German Cancer Research Center (DKFZ), Heidelberg, Germany. ¹²Institute for Medical Informatics, Biometry and Epidemiology, University of Duisburg-Essen, Essen, Germany. ¹³Institute for Epidemiology and Preventive Medicine, University of Regensburg, Regensburg, Germany. ¹⁴Institute for Medical Epidemiology, Biometrics and Informatics, Martin Luther University Halle-Wittenberg, Halle (Saale), Germany. ¹⁵Division of Cancer Epidemiology, German Cancer Research Centre (DKFZ), Heidelberg, Germany. ¹⁶Department of Prosthetic Dentistry and Biomedical Materials Science, Hannover Medical School, Hannover, Germany. ¹⁷Institute for Occupational Medicine and Maritime Medicine (ZfAM), University Medical Centre Hamburg-Eppendorf, Hamburg, Germany. ¹⁸Institute for Prevention and Cancer Epidemiology, Faculty of Medicine and Medical Centre, University of Freiburg, Freiburg, Germany. ¹⁹Institute of Epidemiology and Social Medicine, University of Münster, Münster, Germany. ²⁰Institute of Social Medicine, Epidemiology and Health Economics, Charité - Universitätsmedizin Berlin, Berlin, Germany. ²¹Institute of Clinical Epidemiology and Biometry, University of Würzburg, Würzburg, Germany. ²²State Institute of Health I, Bavarian Health and Food Safety Authority, Erlangen, Germany. ²³Department of Epidemiology, Helmholtz-Centre for Infection Research (HZI), Braunschweig, Germany. ²⁴Institute for Biometrics and Epidemiology, German

Diabetes Center, Leibniz Center for Diabetes Research at Heinrich Heine University Düsseldorf, Düsseldorf, Germany. ²⁵Institute for Community Medicine, University Medicine Greifswald, Greifswald, Germany. ²⁶Institute of Epidemiology, Helmholtz Zentrum München, German Research Center for Environmental Health (GmbH), Neuherberg, Germany. ²⁷Institute for Medical Information Processing, Biometry, and Epidemiology (IBE), Faculty of Medicine, Ludwig-Maximilians-Universität, Munich, Germany. ²⁸Molecular Epidemiology Research Group, Max-Delbrueck-Centre for Molecular Medicine in the Helmholtz Association (MDC), Berlin, Germany. ²⁹Charité - Universitätsmedizin Berlin, corporate member of Freie Universität Berlin and Humboldt-Universität zu Berlin, Berlin, Germany. ³⁰Zahn- und Prophylaxe Centre Priv.-Doz. Dr. Nicole Pischon, Berlin Schönefeld, Germany. ³¹Biobank Technology Platform, Max-Delbrueck-Centre for Molecular Medicine in the Helmholtz Association (MDC), Berlin, Germany. ³²Synoptic Dentistry, Saarland University, Homburg/Saar, Germany.

Received: 25 June 2024 Accepted: 9 January 2025

Published online: 28 January 2025

References

- Peters A, German National Cohort Consortium, Greiser KH, Gottlicher S, Ahrens W, Albrecht M, Bamberg F, Barnighausen T, Becher H, Berger K, et al. Framework and baseline examination of the German National Cohort (NAKO). *Eur J Epidemiol*. 2022;37(10):1107–24.
- Glick M, Williams DM, Kleinman DV, Vujcic M, Watt RG, Weyant RJ. A new definition for oral health developed by the FDI World Dental Federation opens the door to a universal definition of oral health. *J Am Dent Assoc*. 2016;147(12):915–7.
- Frencken JE, Sharma P, Stenhouse L, Green D, Laverty D, Dietrich T. Global epidemiology of dental caries and severe periodontitis - a comprehensive review. *J Clin Periodontol*. 2017;44(Suppl 18):S94–105.
- Marcenes W, Kassebaum NJ, Bernabe E, Flaxman A, Naghavi M, Lopez A, Murray CJ. Global burden of oral conditions in 1990–2010: a systematic analysis. *J Dent Res*. 2013;92(7):592–7.
- von Bultzingslowen I, Ostholm H, Gahnberg L, Ericson D, Wennstrom JL, Paulander J. Swedish Quality Registry for Caries and Periodontal Diseases - a framework for quality development in dentistry. *Int Dent J*. 2019;69(5):361–8.
- Collaborators GBDOD, Bernabe E, Marcenes W, Hernandez CR, Bailey J, Abreu LG, Alipour V, Amini S, Arabloo J, Arefi Z, et al. Global, Regional, and National Levels and Trends in Burden of Oral Conditions from 1990 to 2017: A Systematic Analysis for the Global Burden of Disease 2017 Study. *J Dent Res*. 2020;99(4):362–73.
- Dahl KE, Wang NJ, Skau I, Ohn K. Oral health-related quality of life and associated factors in Norwegian adults. *Acta Odontol Scand*. 2011;69(4):208–14.
- Hugoson A, Koch G. Thirty year trends in the prevalence and distribution of dental caries in Swedish adults (1973–2003). *Swed Dent J*. 2008;32(2):57–67.
- Jordan RA, Micheelis W. Fünfte Deutsche Mundgesundheitsstudie (DMS V), vol. Band 35. Köln: Institut der Deutschen Zahnärzte (IDZ); 2016.
- Kassebaum NJ, Smith AGC, Bernabe E, Fleming TD, Reynolds AE, Vos T, Murray CJL, Marcenes W. Global, Regional, and National Prevalence, Incidence, and Disability-Adjusted Life Years for Oral Conditions for 195 Countries, 1990–2015: A Systematic Analysis for the Global Burden of Diseases, Injuries, and Risk Factors. *J Dent Res*. 2017;96(4):380–7.
- Edman K, Ohn K, Holmlund A, Nordstrom B, Hedin M, Hellberg D. Comparison of oral status in an adult population 35–75 year of age in the county of Dalarna, Sweden in 1983 and 2008. *Swed Dent J*. 2012;36(2):61–70.
- Edman K, Ohn K, Nordstrom B, Holmlund A. Prevalence of dental caries and influencing factors, time trends over a 30-year period in an adult population. Epidemiological studies between 1983 and 2013 in the county of Dalarna, Sweden. *Acta Odontol Scand*. 2016;74(5):385–92.
- Dye BA, Tan S, Smith V, Lewis BG, Barker LK, Thornton-Evans G, Eke PI, Beltran-Aguilar ED, Horowitz AM, Li CH. Trends in oral health status: United States, 1988–1994 and 1999–2004. *Vital Health Stat*. 2007;11(248):1–92.
- Kawashita Y, Kitamura M, Saito T. Monitoring time-related trends in dental caries in permanent teeth in Japanese national surveys. *Int Dent J*. 2012;62(2):100–5.
- Fuller E, Steele J, Watt R, Nuttall N. Oral health and function-a report from the Adult Dental Health Survey 2009. In.; 2011.
- Schmoeckel J, Haq J, Samietz S, Santamaria RM, Mourad MS, Volzke H, Kocher T, Splieth CH, Holtfreter B. Ten-year trends in DMF-S and DMF-T in a northeast German adult population. *J Dent*. 2021;111:103727.
- Jordan RA, Krois J, Schiffner U, Micheelis W, Schwendicke F. Trends in caries experience in the permanent dentition in Germany 1997–2014, and projection to 2030: Morbidity shifts in an aging society. *Sci Rep*. 2019;9(1):5534.
- Dye B, Thornton-Evans G, Li X, Iafolla T. Dental caries and tooth loss in adults in the United States, 2011–2012. *NCHS Data Brief*. 2015;197:197.
- Splieth CH, Santamaria RM, Basner R, Schuler E, Schmoeckel J. 40-Year Longitudinal Caries Development in German Adolescents in the Light of New Caries Measures. *Caries Res*. 2019;53(6):609–16.
- Tonetti MS, Bottenberg P, Conrads G, Eickholz P, Heasman P, Huysmans MC, Lopez R, Madianos P, Muller F, Needleman I, et al. Dental caries and periodontal diseases in the ageing population: call to action to protect and enhance oral health and well-being as an essential component of healthy ageing - Consensus report of group 4 of the joint EFP/ORCA workshop on the boundaries between caries and periodontal diseases. *J Clin Periodontol*. 2017;44(Suppl 18):S135–44.
- Griffin SO, Regnier E, Griffin PM, Huntley V. Effectiveness of fluoride in preventing caries in adults. *J Dent Res*. 2007;86:410–5.
- Marinho VC, Higgins JP, Sheiham A, Logan S. Combinations of topical fluoride (toothpastes, mouthrinses, gels, varnishes) versus single topical fluoride for preventing dental caries in children and adolescents. *Cochrane Database Syst Rev*. 2004;2004(1):CD002781.
- Veneri F, Vinceti SR, Filippini T. Fluoride and caries prevention: a scoping review of public health policies. *Ann Ig*. 2024;36(3):270–80.
- Marthaler TM. Salt fluoridation and oral health. *Acta Med Acad*. 2013;42(2):140–55.
- Schiffner U. Krankheits- und Versorgungsprävalenzen bei Kindern (12 Jahre). In: Micheelis W, Schiffner U, editors. Vierte Deutsche Mundgesundheitsstudie (DMS IV) edn. Köln: Deutscher Ärzteverlag; 2007. p. 155–200.
- Schulte AG. Salt fluoridation in Germany since 1991. *Schweiz Monatsschr Zahnmed*. 2005;115(8):659–62.
- Historie der Informationsstelle für Kariesprophylaxe <https://www.karies.svorbeugung.de/informationsstelle-fuer-kariesprophylaxe/>.
- Chen MX, Zhong YJ, Dong QQ, Wong HM, Wen YF. Global, regional, and national burden of severe periodontitis, 1990–2019: An analysis of the Global Burden of Disease Study 2019. *J Clin Periodontol*. 2021;48(9):1165–88.
- Nascimento GG, Alves-Costa S, Romandini M. Burden of severe periodontitis and edentulism in 2021, with projections up to 2050: The Global Burden of Disease 2021 study. *J Periodontol Res*. 2024;59(5):823–67.
- Trindade D, Carvalho R, Machado V, Chambrone L, Mendes JJ, Botelho J. Prevalence of periodontitis in dentate people between 2011 and 2020: A systematic review and meta-analysis of epidemiological studies. *J Clin Periodontol*. 2023;50(5):604–26.
- Kocher T, Meisel P, Baumeister S, Holtfreter B. Impact of public health and patient-centered prevention strategies on periodontitis and caries as causes of tooth loss in high-income countries. *Periodontol*. 2000;2024.
- Papapanou PN, Sanz M, Buduneli N, Dietrich T, Feres M, Fine DH, Flemmig TF, Garcia R, Giannobile WV, Graziani F, et al. Periodontitis: Consensus report of workgroup 2 of the 2017 World Workshop on the Classification of Periodontal and Peri-Implant Diseases and Conditions. *J Clin Periodontol*. 2018;45(Suppl 20):S162–70.
- Cui Y, Tian G, Li R, Shi Y, Zhou T, Yan Y. Epidemiological and sociodemographic transitions of severe periodontitis incidence, prevalence, and disability-adjusted life years for 21 world regions and globally from 1990 to 2019: An age-period-cohort analysis. *J Periodontol*. 2023;94(2):193–203.
- Eke PI, Borgnakke WS, Genco RJ. Recent epidemiologic trends in periodontitis in the USA. *Periodontol*. 2000. 2020;82(1):257–67.
- Schutzhold S, Kocher T, Biffar R, Hoffmann T, Schmidt CO, Micheelis W, Jordan R, Holtfreter B. Changes in prevalence of periodontitis in two German population-based studies. *J Clin Periodontol*. 2015;42(2):121–30.

36. Yu HC, Su NY, Huang JY, Lee SS, Chang YC. Trends in the prevalence of periodontitis in Taiwan from 1997 to 2013: A nationwide population-based retrospective study. *Medicine (Baltimore)*. 2017;96(45):e8585.
37. Jordan R, Micheelis W. The Fifth German OralHealth Study (FünfteDeutsche-Mundgesundheitsstudie, DMS V). Köln: Deutscher Zahnärzte Verlag; 2016.
38. Schwendicke F, Krois J, Kocher T, Hoffmann T, Micheelis W, Jordan RA. More teeth in more elderly: Periodontal treatment needs in Germany 1997–2030. *J Clin Periodontol*. 2018;45(12):1400–7.
39. Santonocito S, Polizzi A, Marchetti E, Dalessandri D, Migliorati M, Lupi SM, Cicciu M, Isola G. Impact of Periodontitis on Glycemic Control and Metabolic Status in Diabetes Patients: Current Knowledge on Early Disease Markers and Therapeutic Perspectives. *Mediators Inflamm*. 2022;2022:4955277.
40. Genco RJ, Graziani F, Hasturk H. Effects of periodontal disease on glycemic control, complications, and incidence of diabetes mellitus. *Periodontol* 2000. 2020;83(1):59–65.
41. Pussinen PJ, Kopra E, Pietiäinen M, Lehto M, Zaric S, Paju S, Salminen A. Periodontitis and cardiometabolic disorders: The role of lipopolysaccharide and endotoxemia. *Periodontol* 2000. 2022;89(1):19–40.
42. Orlandi M, Graziani F, D'Aiuto F. Periodontal therapy and cardiovascular risk. *Periodontol* 2000. 2020;83(1):107–24.
43. Carra MC, Range H, Caligiuri G, Bouchard P. Periodontitis and atherosclerotic cardiovascular disease: A critical appraisal. *Periodontol*. 2000;2023.
44. Herrera D, Sanz M, Shapira L, Brotons C, Chapple I, Frese T, Graziani F, Hobbs FDR, Huck O, Hummers E, et al. Association between periodontal diseases and cardiovascular diseases, diabetes and respiratory diseases: Consensus report of the Joint Workshop by the European Federation of Periodontology (EFP) and the European arm of the World Organization of Family Doctors (WONCA Europe). *J Clin Periodontol*. 2023;50(6):819–41.
45. Beukers N, Su N, Loos BG, van der Heijden G. Lower Number of Teeth Is Related to Higher Risks for ACVD and Death-Systematic Review and Meta-Analyses of Survival Data. *Front Cardiovasc Med*. 2021;8:621626.
46. Chan PY, Tan ZHJ, Saffari SE, Soh YJ, Teoh KH. Functional oral status and oral health-related quality of life in community-dwelling older adults in Singapore. *Community Dent Oral Epidemiol*. 2024;52(3):313–9.
47. Kim HY, Jang MS, Chung CP, Paik DI, Park YD, Patton LL, Ku Y. Chewing function impacts oral health-related quality of life among institutionalized and community-dwelling Korean elders. *Community Dent Oral Epidemiol*. 2009;37(5):468–76.
48. De Ridder L, Aleksieva A, Willems G, Declerck D, Cadenas de Llano-Pérua M. Prevalence of Orthodontic Malocclusions in Healthy Children and Adolescents: A Systematic Review. *Int J Environ Res Public Health*. 2022;19(12):7446.
49. Grabowski R, Stahl F, Gaebel M, Kundt G. Relationship between Occlusal Findings and Orofacial Myofunctional Status in Primary and Mixed Dentition - Part I: Prevalence of Malocclusions. *J Orofac Orthop*. 2007;68:26–37.
50. Stahl F, Grabowski R. Orthodontic findings in the deciduous and early mixed dentition—inferences for a preventive strategy. *J Orofac Orthop*. 2003;64(6):401–16.
51. Tausche E, Luck O, Harzer W. Prevalence of malocclusions in the early mixed dentition and orthodontic treatment need. *Eur J Orthod*. 2004;26(3):237–44.
52. Lux CJ, Ducker B, Pritsch M, Komposch G, Niekusch U. Occlusal status and prevalence of occlusal malocclusion traits among 9-year-old schoolchildren. *Eur J Orthod*. 2009;31(3):294–9.
53. Collins T. Temporomandibular joint disorders. *InnovAiT*. 2020;13(8):475–83.
54. Gesch D, Bernhardt O, Mack F, John U, Kocher T, Alte D. Association of malocclusion and functional occlusion with subjective symptoms of TMD in adults: results of the Study of Health in Pomerania (SHIP). *Angle Orthod*. 2005;75(2):183–90.
55. Lovgren A, Haggman-Henrikson B, Visscher CM, Lobbzoo F, Marklund S, Wanman A. Temporomandibular pain and jaw dysfunction at different ages covering the lifespan—A population based study. *Eur J Pain*. 2016;20(4):532–40.
56. Tervahauta E, Napankangas R, Narhi L, Tolvanen M, Pirttiniemi P, Silvola AS, Sipilä K. The relation of temporomandibular disorders with oral health-related quality of life in the Northern Finland Birth Cohort. *Cranio*. 1966;2023:1–11.
57. Seweryn P, Orzeszek SM, Waliszewska-Prosol M, Jenca A, Osiewicz M, Paradowska-Stolarz A, Winocur-Arias O, Zietek M, Bombala W, Wieckiewicz M. Relationship between pain severity, satisfaction with life and the quality of sleep in Polish adults with temporomandibular disorders. *Dent Med Probl*. 2023;60(4):609–17.
58. German National Cohort Consortium. The German National Cohort: aims, study design and organization. *Eur J Epidemiol*. 2014;29(5):371–82.
59. Jordan AR, Kuhr K, Ohm C, Frenzel Baudisch N. Methodology of the Sixth German Oral Health Study (DMS 6) to survey tooth and jaw misalignment. *J Orofac Orthop*. 2023;84(Suppl 1):10–8.
60. Volzke H, Schossow J, Schmidt CO, Jurgens C, Richter A, Werner A, Werner N, Radke D, Teumer A, Ittermann T, et al. Cohort Profile Update: The Study of Health in Pomerania (SHIP). *Int J Epidemiol*. 2022;51(6):e372–83.
61. John MT, Reissmann DR, Feuerstahler L, Waller N, Baba K, Larsson P, Celebic A, Szabo G, Rener-Sitar K. Exploratory factor analysis of the Oral Health Impact Profile. *J Oral Rehabil*. 2014;41(9):635–43.
62. John MT, Omara M, Su N, List T, Sekulic S, Haggman-Henrikson B, Visscher CM, Bekes K, Reissmann DR, Baba K, et al. Recommendations for Use and Scoring of Oral Health Impact Profile Versions. *J Evid Based Dent Pract*. 2022;22(1):101619.
63. Campos LA, Peltomäki T, Marôco J, Campos JADB. Use of Oral Health Impact Profile-14 (OHIP-14) in Different Contexts. What Is Being Measured? *Int J Environ Res Public Health*. 2021;18(24):13412.
64. World Health Organization. Oral health surveys: basic methods. Geneva, Switzerland: World Health Organization; 1997.
65. Holtfreter B, Samietz S, Hertrampf K, Aarabi G, Hagenfeld D, Kim TS, Kocher T, Koos B, Schmitter M, Ahrens W, et al. Design and quality control of the oral health status examination in the German National Cohort (GNC). *Bundesgesundheitsblatt Gesundheitsforschung Gesundheitsschutz*. 2020;63(4):426–38.
66. Der Vorstand des NAKO e.V. Datenschutz- und IT-Sicherheitskonzept der NAKO Gesundheitsstudie. In., vol. Edition 3.0; 2021.
67. Kuhn A, Nieters A, Kottgen A, Goek ON, Michels K, Nothlings U, Jacobs G, Meisinger C, Pessler F, Akmatov MF, et al. Feasibility and quality development of biomaterials in the pretest studies of the German National Cohort. *Bundesgesundheitsblatt Gesundheitsforschung Gesundheitsschutz*. 2014;57(11):1255–63.
68. dataquieR: Data Quality in Epidemiological Research. R package version 1.0.9 <https://dataquality.ship-med.uni-greifswald.de/>.
69. Cleveland WS, Devlin SJ, Grosse E. Regression by local fitting: Methods, properties, and computational algorithms. *J Econometrics*. 1988;37(1):87–114.
70. Jordan R, Micheelis W. The Fifth German Oral Health Study (Fünfte Deutsche Mundgesundheitsstudie, DMS V). Köln, Germany: Deutscher Zahnärzte Verlag; 2016.
71. Jagodzinski A, Johansen C, Koch-Gromus U, Aarabi G, Adam G, Anders S, Augustin M, der Kellen RB, Beikler T, Behrendt CA, et al. Rationale and Design of the Hamburg City Health Study. *Eur J Epidemiol*. 2020;35(2):169–81.
72. Güllow H, Maeglin B. Über die symmetrische Verteilung der Zahnkaries und deren Bedeutung für kariesstatistische Untersuchungen. *Schweiz Monatsz Zahnheilkd*. 1964;74:315–26.
73. Heaton B, Garcia RI, Dietrich T. Simulation study of misclassification bias in association studies employing partial-mouth protocols. *J Clin Periodontol*. 2018;45(9):1034–44.
74. Splieth C, Schwahn C, Bernhardt O, Kocher T, Born G, John U, Hensel E. Caries prevalence in an adult population: results of the Study of Health in Pomerania, Germany (SHIP). *Oral Health Prev Dent*. 2003;1(2):149–55.
75. Kingman A, Susin C, Albandar JM. Effect of partial recording protocols on severity estimates of periodontal disease. *J Clin Periodontol*. 2008;35(8):659–67.
76. Vettore MV, de Almeida LG, Leao ATT, Sheiham A, do Carmo Leal M: Partial recording protocols for periodontal disease assessment in epidemiological surveys. *Cad Saude Publica*. 2007;23(1):33–42.
77. Beck JD, Pankow J, Tyroler HA, Offenbacher S. Dental infections and atherosclerosis. *Am Heart J*. 1999;138(5 Pt 2):S528–533.

Publisher's Note

Springer Nature remains neutral with regard to jurisdictional claims in published maps and institutional affiliations.